

# Stratford General Hospital

# Foundation Monitor



Community Report 2015/16



# Making a Real Impact... A Year

## 2015/2016 Chair's Message

American President Abraham Lincoln – a fascinating and highly quotable president even by today's standards – once said that if he had six hours to chop down a tree, he would spend the first four hours sharpening his axe.

It's a valuable observation on the importance of planning and preparation in achieving success, and it's a lesson that we've embraced at the Stratford General Hospital Foundation.

In the past year, we've spent a great deal of time and effort creating, implementing and incorporating our strategic plan. While that may not sound exciting to everyone, we see our strategic plan as a living, breathing document that's indispensable to our organization.

To use a nautical analogy, a strategic plan helps ensure you're headed in the right direction and able to make speedy course corrections when needed; it ensures you have the right people on board for a successful voyage, and the right tools to measure your progress towards your ultimate destination.

No charity or non-profit should leave port without a strategic plan – especially one that must navigate the changing and often challenging seas of healthcare.

We sought and received tremendous feedback from various key stakeholders, including physicians, volunteers, and donors. We were buoyed up by their positive feedback, ideas, and suggestions, which played a key role in fashioning our plan.

We aligned our Foundation's Strategic Plan with that of the Huron Perth Healthcare Alliance, utilizing the Alliance's three strategic pillars – people, partnerships and performance – and reinterpreting these to enable us to chart a course towards our vision: To be a healthcare charity of choice and a recognized leader in healthcare philanthropy in our region.

The process of planning was invaluable. We learned a great deal: how our donors like to be communicated with; how to define and measure success; what we're doing right and how we can improve, as well as the importance of exploring potential new partnerships and working relationships in a constantly evolving environment.

With all this focus on Strategic Planning, you may be a tempted to think that's all we've accomplished of late. Nothing could be further from the truth!

In the past year, the Foundation has continued to pay off its commitment to fund the Hospital's new North Wing, and has almost completed our funding commitment to the MRI. The Foundation, with the enthusiastic support of our donors, has also entered the "quiet phase" of an \$18 million plus fundraising campaign for capital equipment, new technology, and replacement equipment.

Already, significant impact is being made. With donor support, we've purchased the first three of 7 anesthetic machines used in some 10,000 surgical procedures carried out at Stratford General Hospital each year. Through the support of a "matching gift" initiative, backed by the Stratford General Hospital Volunteers, we're also purchasing critical lab equipment including a Blood Gas Analyzer and a Microorganism Analyzer to help identify and battle life-threatening bacterial infections like sepsis.

Of course, as Board Chairman, I receive a great deal of encouraging feedback from patients and other community members on our positive impact. But this truly is a team effort. Our Foundation Board is made up of dedicated and talented volunteers who draw upon a wealth of experience and expertise to help steer our organization. They have my thanks.

And no organization can reach its destination without people to operate the vessel. Our very talented Executive Director Andrea Page, and her knowledgeable and motivated staff – Susan, Melissa and Christy, provide the energy and fundraising expertise that is crucial to our success. I have nothing but admiration for them.

But what about the donors and what about the patients you might ask? While I've left them to last, these are the two most important groups on our voyage to success. Without the patients who we seek to help, there wouldn't be any reason to set sail in the first place. May we always be guided by their needs first and foremost.

And to our donors...you are the force that propels us on our journey. Without you, none of what we work towards would be possible. You have our heartfelt gratitude. May you always be the wind in our sails.



Rick Orr  
Board Chairman

### **Governance & Stewardship Volunteer Board**

#### **Stratford General Hospital Board of Trustees 2015-2016**

Rick Orr, *Board Chair*

Hugh McDonald, *Vice Chairman*

Debbie Reece, *Treasurer*

Andrea Page,  
*Secretary and Executive Director*

Phil Buxton

Dave Carter

Bob Gulliford

Brent Hiller

Lisa Hyde

Dr. Keith Sparrow

Andrew Williams

Colleen Misener,  
*Honorary Life Member*

# to Remember . . . Highlights!



■ Our community continues to respond generously to our Christmas mailing reaching \$ 240,113 to date with a total of 1203 donors with the average gift of \$199.60

■ Volunteers of Stratford General are a committed core of some 230 members who play an essential role in patient care and in fundraising. This year their matching gift pledge of \$150,000 helped double funds for lab equipment.

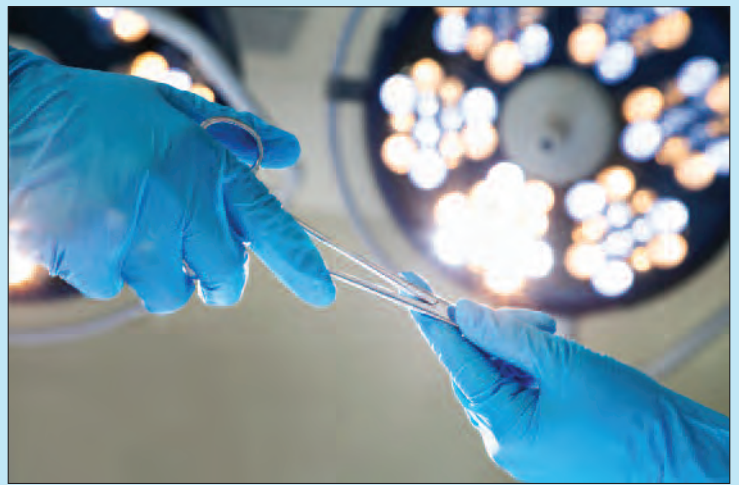
■ Over the past few years the Foundation has disbursed over \$18 million to the redevelopment project including this fiscal year's \$600,000 towards construction. To date \$3.5 million has been disbursed to MRI with the \$3.8 million MRI project to be completely paid for by next year.



■ \$303,592 raised in new Matching gift mailout for specialized Lab equipment used to detect sepsis. A salute to the Volunteers of Stratford General who matched every donation dollar for dollar.

■ Nuclear Medicine Specialist Dr. Alhrbi demonstrated the benefits of Stratford General Hospital's new SPECT-CT Camera through the review of a number of case studies. SPECT-CT enables the direct correlation of anatomic information and functional information resulting in greater detail and accuracy. SGH is one of a few sites utilizing this technology. The SPECT-CT Nuclear Medicine Camera is now "paid in full" thanks to the generosity of our donors! L to R: SGHF Board members Dave Carter and Brent Hiller, Interim Manager Medical Imaging Louanne Plain, SGHF Board chair Rick Orr, SGHF Board member Debbie Reece, Nuclear Medicine Specialist Dr. Mashael Alhrbi, Nuclear Medicine Technologists Jenn Muir and Alysha Wagoner.

■ Dollars are coming in for our Spring , Instrumental In Saving Lives mailer for the purchase of Anaesthetic machines – 5 of the 7 needed are on order expected to be on site by end of June.



STRATFORD GENERAL HOSPITAL  
*Foundation* ♥  
"People Caring for People"

## Debbie Reece Guidance & Expertise



When Debbie Reece, currently Chief Financial Officer at Festival Hydro, was recruited as a Board Member by Chris Thomson and the late Ray Waller, she hoped her strong background might benefit the organization in key areas of finance.

“I also saw it as an opportunity to give back to the community in the area of healthcare, which is by far one of the most important things in our lives,” says Debbie.

Nine years later, Debbie leaves the board having had a significant impact as a Finance Committee Chair and long term member, and also having been at the helm as Board Chair during some of the most exciting times in recent history – including the final stages of the \$20 million Hospital Redevelopment Campaign as well as key portions of the \$3.8 million MRI Campaign.

“The Foundation Board and the Staff are both central to our successful results and the funding of various key priorities at the hospital. I’ve truly enjoyed working with them,” says Debbie. “And the generosity of our community has been overwhelming. The money for much of the equipment and facilities we need relies directly on donations, and our donors from throughout Huron and Perth should be very proud of what they’ve accomplished.”

“Debbie will be truly missed by our Board and Staff,” says Foundation Executive Director Andrea Page. “Steady, calm and unflappable, Debbie was always able to think critically and draw upon her experience and strong financial background for the benefit of the Foundation and our donors. We owe her a great debt of thanks.”

## Dave Carter Communications motivate donors to Generosity



While Dave Carter is perhaps best known for his long term association with the Stratford Beacon Herald, he has also been a key player on the Stratford General Hospital Foundation Board for some 11 years, helping steer the Foundation through major capital campaigns like the \$20 million Heart and Soul and the \$3.8 million MRI Making a Real Impact campaigns.

“Dave played an important part in securing major support from the Beacon Herald, and both those campaigns were successful largely through communications efforts which informed and motivated our donors,” says Andrea Page, Executive Director. “We couldn’t have accomplished that without Dave Carter.”

With a busy work schedule – one that is becoming even more demanding lately – Dave has always been selective about where he contributes his time and talent. “I wanted to get involved with a cause that was important to me, important to the community, and important to the readership of the paper,” he says. “Clearly the hospital fits that bill.”

Dave says that his time at the Foundation has been valuable. “There were always rewards and accomplishments along the way – whether it was finishing the new North wing, renovations to the building, or bringing in the MRI,” he says. “I met some really nice, dedicated and very talented people who were highly motivated to get things done.”

Dave’s 11 years of service with the Foundation, combined with his expanding role at Postmedia Network Inc. mean it’s time to relinquish his place as a Board Member and chair of the Resource Development & Public Relations Committee. “But it’s safe to say that somewhere down the road – maybe in my retirement years – I certainly would consider coming back to spend some more time on the Board.”

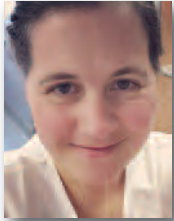
“It’s also safe to say that Dave would always be welcome back,” adds Andrea Page.

# Being a Nurse Means...

Time to recognize the outstanding compassionate and safe care nurses provide to our patients 24 hours per day, seven days per week, 365 days per year.

"By providing essential bedside care our nurses have a significant impact on the lives of our patients, and their families," says Donnalene Tuer Hodes, Program Director Surgery, Maternal Child & MDRD and Chief Nursing Executive. "They also contribute significantly in leadership and administrative roles to the health care system by conducting research, developing new models of care and teaching learners."

HPHA employs 464 Nurses - 339 Registered Nurses, 123 Registered Practical Nurses and two Nurse Practitioners. There are no areas of the organization they do not touch, whether through involvement in direct patient care or in administrative and supportive departments such as Infection Prevention and Control, Occupational Health, and Information Technology.



**Catherine Walsh, RN,  
Critical Care, Stratford**

As a nurse I have the opportunity to be intimately involved in the hardest, most emotional, trying, exhausting and joyful times in people's lives. People who only moments before were complete strangers now trust you with their, or their loved one's, health. I don't take this role lightly. Nursing to me is about honouring these times and ensuring that these experiences are satisfying and meaningful for all involved, while also providing safe, high-quality, critically evaluated, educational and effective healthcare. Nursing is a profession where you go to work knowing that you will impact someone's life and/or someone will impact yours.

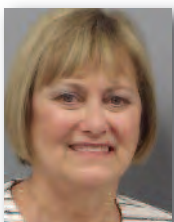


**Debby McLeod, RN,  
Team Leader, Emergency, Stratford**

Nursing is complex, diverse, challenging, and is the heart of TEAM work (Together Everyone Achieves More). Over the years I have seen the nursing continuum go from team nursing, to primary nursing, and now Collaborative, all emphasizing best patient care.

Nursing is the foundation of our hospitals. We are patient advocates; the bridge of communication between all multidisciplinary services; health teachers and health nurturers and the front line people in the circle of life - helping people from birth, through childhood, to adulthood and into death.

It is the best career! I have laughed, praised, been frustrated, challenged and even cried with our patients. Every day I learn something new!



**Donnalene Tuer Hodes, RN,  
Chief Nursing Executive, Program Director  
Surgery, Maternal Child & MDRD**

There is no profession that has the diversity, opportunities and rewards that Nursing provides. It is through the gift of providing care and compassion to others, that we learn more about ourselves, who we are and what we aspire to be. My role as a nurse has evolved and changed over time. No one role is more important than another, but each role helped move me toward who I am today and who I hope to become tomorrow.



**Debbie Turner, RN,  
Manager, Quality & Risk**

In my opinion, nursing is the best profession. It has provided me with personal and professional satisfaction on a multitude of levels and at various memorable points within my career as well as the lives of the many patients I have had the pleasure of providing care for.

I can best answer the question "What does being a nurse mean to you?" by sharing with you some of my most memorable moments as a nurse.

Nursing is: spending a quiet Christmas eve in the ER at the foot of a patient's bed chatting while washing feet that had seen many footsteps walked in poor fitting shoes and being content knowing that you made a difference after hearing that the patient passed away the very next day; it is being allowed into the private lives of patients to share their grief when delivering a stillborn and not being embarrassed to cry along with the family; it is about being part of a family that has the ability and professionalism to put aside personal differences in order to come together in crucial times when our patients needs us to act as a team; it is about knowing when to stop the rushing to be beside a patient who is taking their last breaths, to hold their hand to let them feel that they are not alone; it's witnessing the most hardened colleague hold the phone to a patient's ear so that every family member on the other end could say their goodbyes.

Nursing means being the patient's advocate without the interference of age, sex, race, socio-economic status, it's about truly understanding that our patients are not just "the patient in room XYZ" but that they have a name, and they bring with them needs and fears and that it's my responsibility to do everything I can to meet their needs.

Nursing is one of the few professions that allow individuals to partner with their patients and families on such a broad spectrum. Rarely is one day ever like the one before it.

Nursing is ups and downs, and twists and turns you never imagined nor expected.

It is continuous learning and a profession that I am so very proud to be a part of.

# Making A Real Impact . . . A Salute

Each donation is precious, and every donor is priceless...individuals, groups,



## Royal Canadian Legion Branch # 8, Stratford – Poppy Fund

A salute to the Legion’s Poppy Committee for naming the new Chemo Unit Reception across from the Chemo unit waiting room an improved patient experience and patient safety; providing a more welcoming environment for those arriving for cancer treatment, reducing their stress levels.

L-R: Ken Albert President and Poppy committee Chairman, Dot Harmer Poppy Committee Secretary, Leroy Workman member Poppy Committee, Doug Harmer member Poppy Committee, SGH Foundation ED Andrea Page, Doreen Zurbrigg member Poppy Committee.



## Combining passion for art with passion for our hospital!

We can never say thank you enough to Audrey Durst and Chartwell Anne Hathaway Retirement Residence for their gift of \$2,000 presented at the residents’ Christmas party in December. 100% of the proceeds from Audrey’s Calendar sale benefit the Integrated Stroke Unit at the Stratford General Hospital site of HPHA.

L-R: Andrew Williams CEO HPHA, Audrey Durst, Kathleen Needles Chartwell Anne Hathaway Retirement Residence, Andrea Page ED SGH Foundation.



**Stratford General Hospital Emerg Doctors** are at the forefront of the new *In our Hands* equipment campaign sponsoring the purchase of a cardiac probe. A special thanks to Drs Miriam Mann, Anna Mayer, Shirin Mehrain, Phil Schieldrop, Stephanie Sischek, Tristan Walker, Noelle Carrier, Andrzej Kluz and Mike MacIsaac. The new cardiac probe (aka phased array probe) can be used to do ultrasounds of the lung and heart to diagnose pneumonia, pulmonary edema, pericardial effusions and pneumothoraces, as well as look at overall cardiac function, helpful in our most critically ill patients.



STRATFORD GENERAL HOSPITAL  
*Foundation*   
"People Caring for People"

## Stricklands Support has Impact!

Special thanks to the Strickland’s team for their support towards new anaesthetic machines! Instrumental in saving lives!

# to Our Community's Generosity!

and businesses building a brighter future for healthcare throughout our region.



### Moffatt & Powell Builds Yearly Support.

The team at Moffatt & Powell are already planning next year's events. This year their generous gift of \$900 is donated towards the purchase of anesthetic machines.

L-R: Lucas Raycraft, John VanBakel, Norm Hoffmeyer, Sandy Bennewies, Tommy Sinnamon, Carol McKenzie, Glen Ruston, Ted Newman.



### A special thanks to Klomps Home & Garden and Barb Klomp, RN.

Thanks to proceeds from November's Klomp's Ladies Night, a new vascular Doppler and probe arrived on the Critical Care Unit!

L-R: Andrea Page SGHF ED, Barb Klomp RN, Jane Moore RN Interim Manager CCU HPHA and Andrew Williams HPHA CEO.



### Knights of Columbus, Kilroy Council #1431 pacesetting pledge of \$100,000 is Paid in Full!

A big thank you to the Knights of Columbus, Kilroy Council #1431 for their tremendous support of our hospital!! Their pacesetting pledge of \$100,000 to the Heart & Soul Campaign named the Maternal/Child Visitor's Lounge and Quiet Room in the revitalized and expanded Maternal Child Unit. This commitment supports their family values and their focus of caring for the community. This additional gift to our hospital follows fulfillment of a \$50,000 pledge which purchased a Medi Lift, Light Source, AO Sagital Saw, Drill for Hip Surgery, 3 Ortho Clinic Stretchers, Arthroscopic Instruments/Orthopedic Instrument Sets, High Flow Cannular Arthroscope, and Ortho Clinic Surgery Table. We can never say thank you enough! Knights of Columbus, Kilroy Council #1431 members celebrate the completion of their pledge to the Heart & Soul Campaign.

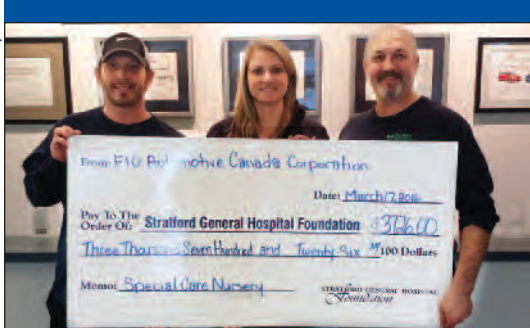
L-R, holding big cheque and signage: Grand Knight John Price, Deputy Grand Knight Ken Gaffney, Financial Secretary Tony Vigar and SGHF Board Chair Rick Orr.

### FIO Automotive Revs up support for Special Care Nursery.

A salute to all the employees at FIO who took part in fundraisers to raise \$3,726 for our tiniest patients.



Social Committee - L-R: Tina Higgs, Ashley Vande Velde, Stacey Robertson-Coward, Karen Bell. Absent: Dan Iredale.



Golf Committee - L-R: Bud Dixon, Ashley Vande Velde, Peter Tesluk.

# We Can Never Say Thank You Enough to Our Donors



RNs Jane Moore and Karen Wilson give thanks to donors who helped purchase a cardiac monitor, 3 specialized air mattresses and a bariatric bed for the Intensive Care Unit.



The team on the Medicine Floor are grateful for their new bariatric bed specialized for larger patients. Front : Natalie Weber RPN, Colette Bondy PT. Rear: Bonnie Thompson Manager Med/ISU, Whitney Shore RN, Amy Cressman RN, Crystal Mace PSW, Candace Ngungu RN.



Bonnie Thompson, Manager; Shannon Clark Dialysis Unit Assistant; Karen VanRyswyck RN; Jennifer Brown RN say thank you for their New wheelchair accessible scale which has digital weight memory and is used 2X a day for every patient.

The unsung heroes of the lab add their thanks for their new technology.



Lab Upright Fridge – Loriana Wszolek, Medical Lab Technician.



Lab Cassette Printer – Terri Natwyary, Medical Laboratory Technician.



Benchtop Centrifuge – Kathleen Grogan, MLA/T Core Lab.

## 2015/2016 EQUIPMENT PURCHASES

The Stratford General Hospital Foundation disbursed \$839,099.75. The items sponsored through our donors' generosity include:

- 2 Symphony Breast Pumps
- 4 Power Recliners
- 2 Video Ureterscopes with Sterilization Trays
- Ultramed Ureterscope
- Ultrasound Transducer
- 2 Bariatric Beds
- 3 Air Supply Mattresses
- Cardiac Monitor
- Sonosite Ultrasound Stand
- Wheelchair Digital Ramp Scale
- Cassette Printer
- Upright Lab Refrigerator
- Benchtop Centrifuge
- MRI – \$30,000 – towards MRI
- Building Redevelopment construction – \$600,000
- Hospital Staff Education

Please visit our website [www.sghfoundation.org](http://www.sghfoundation.org) for a complete list.

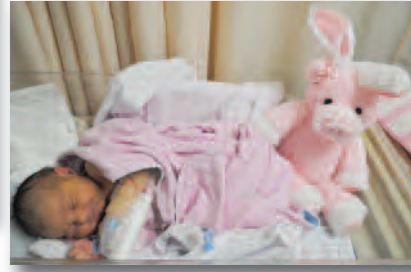
STRATFORD GENERAL HOSPITAL  
*Foundation* ♥





Hospital staff, physicians, friends and Loralee McNaughton's family are celebrating the launch of the Teddy Bear and Friends mini campaign to support the special care nursery at Stratford General.

# The Bear Necessities



## Nurse focused on tiniest patients launches special fundraiser

Surrounded by plush animals from teddy bears to a huge purple hippo, Loralee McNaughton, a registered nurse who has cared for children in the Maternal Child Unit for some 30 years, tells her story about how she wants to make an impact in the special care nursery by helping to raise \$30,000 towards specialized equipment including new monitors.

"It's for selfish reasons because I get to use the new monitors", says Ms McNaughton. She notes new technology and standardized monitors, give nurses and the paediatricians the tools to do their jobs....and focus on the babies. The monitors display heart rate and respiratory rates of premature babies or newborns with infections or breathing problems.

Loralee found out about the idea from a hospital in Kingston, and then changed it and made it her own. Investing countless hours she and her family were able to secure over 400 plush animals from Shoppers Drugmart (London & Stratford) Giant Tiger, Guardian Drugstore, and Walmart in Listowel. Other stores gave her deep discounts.

For every donation of \$100, a Teddy Bear or Friend will be given to a child in the Special Care Nursery or in the hospital. At Stratford General site last year 1,124 babies were delivered, 342 children were cared for in Pediatrics and 91 babies needed the intense care provided in the Special Care Nursery.

Donations will be accepted through the SGH Foundation website.

"When you have a passionate RN who is willing to spend her own time to help the patients she cares for, you have to embrace that and enable her since there is nothing more powerful than that kind of commitment," said Andrea Page, Executive Director of the Stratford General Hospital Foundation.

Stratford General is the largest hospital in Huron and Perth Counties with over 1,100 births a year. In addition to the babies born at the hospital; babies born elsewhere but needing more than routine care are transferred to our Special Care Nursery which is a Level II Neonatal Intensive Care Unit. Dr Kirsten Blaine, noted that the delivery and newborn period is often a very happy and exciting time for families. What many families don't realize is that a newborn

has to go through a very complex transition from inside their mother to the outside world, and that there can be unexpected complications.

Babies cared for on the unit include;

- Premature babies as early as 33 weeks
- Babies born small who have problems with feeding or blood sugars
- Babies at high risk of infection and require closer monitoring
- Babies with breathing issues, either as a result from prematurity, infection or part of transitioning from extra-uterine life
- Babies who need intensive treatment and phototherapy for jaundice
- When babies have more severe or complex conditions, our paediatricians and nursing staff have the expertise and training to stabilize them, begin treatment and make arrangements for transfer to a Level III Centre in Toronto or London.

The Stratford General Hospital Foundation Board is in the planning stages of a major capital campaign focused on giving hospital staff and physicians the tools they need to care for patients throughout our communities. At present our Hospital has a priority list of over \$18 million worth of medical equipment. Much of it is high tech and leading edge...most of it is expensive...All of it is critical.

According to Page, while the official launch of the capital campaign is not planned until we are halfway to goal, we just can't wait. In a traditional building campaign, dollars are disbursed to the hospital at the building's grand opening...so there is time to accumulate generosity. With an equipment campaign we are endeavoring to use that generosity immediately by purchasing equipment once the dollars are in. From anesthetic machines to special care nursery monitors, donors will see an immediate impact from their gifts.

Loralee McNaughton is counting on the community's generosity and support of our next generation with a goal of \$30,000 for her event. "We are going to beat it," she says with enthusiasm. Donors will get the "warm and fuzzy feeling" and make an impact she adds.



# VOLUNTEERS — Roots of Strong Communities —



*Volunteers are the roots of strong communities. Just like roots are essential for trees to bloom, volunteers are essential for communities to bloom.*



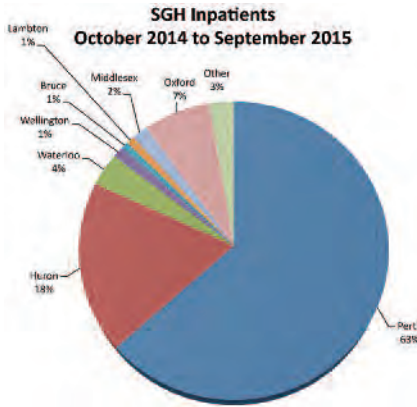
*Thanks to volunteers, our communities grow strong and resilient. Every volunteer effort leaves a profound and lasting trace in a community, much like tree rings that appear over time.*



# Did YOU Know?

## 2015/16 At Stratford General

- 1,161 babies were delivered
- 184 babies were treated in the Special Care Nursery
- 24,949 patients were seen in the Emergency Department
- 1,997 inpatient surgeries and 10,627 day surgeries were performed
- 330 children treated on the Pediatric Floor
- 589 Mental Health inpatients were cared for
- 880 Patients treated in ICU & Telemetry Unit
- 30,348 X-Rays were taken and 11,728 CT Scans were performed
- 17,271 Ultrasound Exams, 2,935 Nuclear Medicine Exams and 1,671 Echo Cardio Exams were performed
- 6,308 Mammography Exams and 3,125 Ontario Breast Screening Program (OBSP) exams were performed
- 4,870 MRI scans were performed
- 3,878 Dialysis Visits
- 1,104 Oncology Visits ( Chemo Only)



## 2015/16 Throughout HPHA's 4 sites (Stratford, St. Marys, Seaforth, Clinton)

- Babies Delivered ..... 1,161
- Acute Patient Days ..... 31,141
- Complex Continuing Care Patient Days ..... 9,479
- Rehab Patient Days ..... 4,020
- Mental Health Patient Days ..... 4,466
- Inpatient Surgeries Performed ..... 1,997
- Day Surgeries Performed ..... 12,681
- Patients seen in the Emergency Departments ..... 58,403



STRATFORD GENERAL HOSPITAL  
*Foundation*  
"People Caring for People"

## Lasting Legacy the Promise of Tomorrow

Ordinary people show extraordinary generosity by leaving legacy gifts to our hospital in their wills

SGHFOUNDATION.ORG  
519.272.8210 ext. 2626

# Donations in Honour of and in Memory of ...

The Stratford General Hospital Foundation is grateful to the family members and friends who have made Honour and Memorial donations from October 7, 2015 to May 1, 2016.

## ***In Honour of...***

Betty Jean Boyce	John Dietrich	Nicholas Groenestege
Hugh & Gayle Ahrens	Ron Boyce	Dolores Gulliford
Ed & Geraldine Belliveau	Allene Bradley	Norman Hall
Laverne Bender	Wendy Brenner	Walter Hansen
Brady Dow	Dorothy Brock	Mrs. Irene Harloff
Sharon McConnell	Shirley Brodhagen	Bill Hartsburg
Diana McDonald	Miles Browning	Darlene Haynes
Lucas McLean	Aidan James Butler	Vic Hayter
Jillian Rutherford	Leonard Butson	Audrey Marie Heinbuck
Andy & Mary Veldman	Marlene Buuck	Larry Herman
David Wray	Lynn Buxton	Wilbert Herman

## ***In Memory of...***

John Cassidy	James "Jim" Erickson	Don Hocking
Maurice Allard	Bernice Facey	Howard Horn
Margaret Allen	William Fehr	Donald Hoshel
Alice & Gerald Anderson	Neil Leonard Ferguson	Sheila Huntley
Esther Anguish	Louis Feryn	Jack & Irene Hutchison
Murry Arthur	Grace Finnie	Shirley Hutchison
Howard Ballantyne	Harvey Fleischauer	John Hutton
Florence Bartja	Joan Fletcher	Christine Hyde
Maria Basbas	Paul Ford	Dilys Jones
Frances Battle	Lloyd Forman	Gary Josling
Melchor Bayani	Lorne Foster	Nelson Kahle
Linda Beare	Jerry Franken	Nora Kahle
Alison Becker	Harold & Margaret Fuhr	Don Kane
Beatrice Beighton	Ken Fuhr	Linda Karkheck
Ruth Bell	Aaron George	Gunter Keller
Louisa Biggelaar	Irene Glab	Peter Klomp
Anita Billo	Bill Gorsline	Elmer Kropf
Anne Billo	Irene Gorsline	Frank Lange
Gordon Billo	Shirley Gottschalk	Don Larkworthy
Brandon Blake	Sharon Graham	Harold Leasa
Dorothy Blasdale	Ken Gransden	Clara L'Heureux
Bill Bodenham	Nellie Green	Molly Lindsay-Kent
Arthur W. Boon	Karen Greensides	Jack Listman
Elizabeth Boon	Robert Greensides	Marion Long
Arden Bott	Maureen Griffin	Murray Long

Carlton Lotz	Bruce O'Donnell	Lorne Ruller	Larry Urbach
Alice Louwagie	Joe O'Keefe	Jean Rumig	Wilhelmina Van Den Tempel
Mervyn Luckhardt	John O'Keefe	Dorothy L. Ryde	Bernice Van Herwynen
Dr. A. J. MacDonald	Bob Osborne	Ken Sallows	Tony Van Klooster
Dora Mallon	Shirley Page	Lillian Sallows	Adrian Van Nynatten
Ted Mallon	Angelina Paola	Fred & Violet Savelle	Jim Veldman
Catherine Manners	Antonio Paola	Ray Savile & Sons	Christina Viani
Dr. Hassan Ben Mansour	Janice Parker-Bell	Howard Schade	Keith Volland
Marion Marshall	Clarence Patterson	Flora Schauber	Darryl Vorstenbosch
Gary Martin	Brian Pearson	Roy Schauber	Wilmer Wagler
Betty Masson	Dave Persad	Sharon Scheircih	Elsie Walker
Sandy McCormick	Ken Petrie	Stanley Schellenberger	Vincent Walker
Kenneth McEwen	Doris Pflance	Ed Schepka	Dennis Washburn
Ken McIlroy	Clara Pinder	Doris Schmidt	Olive Weicker
Marlene McInnes	Lawrence Plaetzer	Duncan Scott	William Weicker
Harold McKittrick	Doris Player	Jean Scott	Richard Wells
Robert McLachlon	Brian Pletsch	William Scott	William Wellwood
Joan McLean	Douglas Pletsch	Dave Seigner	Anna Wessel
MacKenzie Arthur McLeod	Glenn Pletsch	Don Sheridan	Bob Sr. & Vera Weston
Clarence McNaughton	William Pol	David Sherwood	Alma Wettlaufer
George McRae	Ruth and Walter Priestap	Ralph Siemon	Edward Wettlaufer
Arnold Merkel	Heather Proctor	Elizabeth Simpson	Jack Whyte
Bill Merkel	Kay Quipp	Joe Skinner	Victoria Wiedemann
Edward Messerschmidt	Doug Rader	Ronald F. Skinner	Dennis Wilhelm
Viola Messerschmidt	Elmer Rader	Allan Smith	Glenn A. Wilhelm
William Moffett	David W. Reed	Paul Smith	Jean Wilker
Darren Mohr	Dorothy Reibling	Charles Snell	Elmer Williams
Glen Mohr	Gladys Reid	Eileen Spellman	Jean Williams
Murray Mohr	Helmut Ress	John St. Clair	Roy Willis
Helen Morrison	Marie Ress	John Steckly	Martien Wilts
Margaret Murray	Brian Reynolds	Robert Stere	Harold Wood
Helen & Hugh Myers	Jackie Richards	Marjorie Stock	Patrick "Paddy" Woods
Lillian and Robert Myers	Eugene Ross	Robert Tam	David Wray
Bob Nagle	William Ross	Al Tapley	Richard Wray
Leonard Nagle	Ferne Roth	Adrian Theijsmeijer	Sharon Wreford
Dolores Neeb	Ken Roth	Maureen Thomas	Elmer Yantzi
Paul Neidig	Marjorie Roth	Wilhelmina Thompson	Jim Yeates
Elsie Newton	George Roulston	John Tompkins	Peter Young
Barbara Norris	G. Norman Rousseau	Clifford Tosh	Irene Yundt
Bernice Norris	Donna Rowe	Harry Tribick	



# Page's Page

Patients are the true heroes at our hospital. Their experiences and struggles are poignant and powerful: a tiny baby fighting for each breath in our special care nursery; a young man recovering from cancer surgery; a dad in the ICU struggling to overcome blood clots in the lung; a mom waiting for her breast biopsy results; a family in Emergency Trauma after a car accident. Every patient story is fraught with emotions from pain and despair to joy and resilience.

In any story, a Hero has a Purpose/Mission, meets an Obstacle and must overcome it. The Hero achieves victory and emerges transformed and wiser. A clear mission is crucial because it helps the public to see just what the stakes are and how to value the success of the hero.

In patient stories, the Heroes are the patients, the Purpose is living a healthy, productive life and being there for family members, the Obstacle is an illness or injury which they must overcome with the help of our hospital. And the stakes are high; with everyone focused on the best result— a success story with the patient emerging with gratitude to their doctors/caregivers and a greater appreciation of life.

Every story needs an enabler, a mentor, or a helper for the hero – that's where our doctors, nurses, other care givers and

donors come in. Donors are a critical part of the narrative – with donors as key partners empowering our caregivers through your generous support, helping them to continue their fight to save lives, promote health and battle disease.

Who amongst us hasn't battled a life threatening illness in our family, rallied around a neighbor or friend as they underwent life-saving surgery, or felt the sting of loss of someone near and dear to us?

At Stratford General Hospital each day sees a battle for life – a constant struggle to diagnose and treat illness; to heal and restore health using all the tools, technology and skills our caregivers possess.

Giving our caregivers the "tools" to do their job is all we ask. And with no government funding for new and replacement hospital equipment, we must rely on the generosity of those who value our work and support our vision of better healthcare and a stronger hospital for us all.

I wish I could show you how important every donated dollar truly is. Each day a surgeon uses equipment purchased with donations to save lives ... a seriously ill patient's vital signs are monitored with equipment funded by a donor ... high tech images are examined, helping to detect cancer at an early stage, bringing the hope of a longer, healthier life. All are possible because of the generosity of donors.

Devotion to quality, compassionate care and commitment to excellence is unrivaled amongst our doctors, nurses, volunteers and other healthcare professionals – the people we trust with our lives when we walk through the hospital's doors.

We are all working towards our mission: Giving to life and a lifetime of giving. With our donors and hospital staff working together, our stories will have the best endings possible.

## Donor stories have Impact – Happily Ever After

### Jamie and Brady Dow

*A picture is worth a thousand words...*



Our son Brady Dow was born at 35 weeks due to me having Toxemia. We both spent 10 days in hospital... Brady in the nicu and I recovering from the harm the Toxemia did to my body. He is our strength and joy.

Thank you Stratford General Hospital maternity ward and nicu doctors and nurses for helping our little man and I to be healthy and strong enough to come home.

Not a day goes by that we don't forget how grateful we are for all you did for our family. Thank you.



### Gratitude Names Surgery Bay

Dr. Lefebvre stands beside a plaque that reads; " In appreciation of Mary MacDonald, Kyle MacDonald – In honor of Dr. Kevin Lefebvre and the OR team for excellent care.

Dear Dr. Lefebvre,

*On Monday, July 6, a lovely elderly lady named Mary MacDonald was sent to your hospital emergency department by Dr. Nelson Chan of South Huron Hospital in Exeter. I am Mary's daughter Kyle, and I had the "pleasure" of meeting you and Dr. Shane Smith under unfortunate circumstances that afternoon.*

*I wanted to let you know that we did the right thing! My mother finally went home on July 31, after a brief stay back in South Huron hospital, and then an additional week in a respite room at Royalcliffe residence in London. Being at home in her familiar surroundings has accelerated her recovery, and she is just "like new" again.*

*I appreciate that it was difficult for you to make the decision to operate on a 96-year old lady, and we were certainly cognizant of the risks involved. But I will never forget her saying to you "I think we should go for it!"*

*I wanted to take the time to say thank you, Dr. Smith and entire team at Stratford General Hospital for your time, your amazing care of my Mother, and your dedication to improving the lives of Canadians.*

Sincerely, Kyle MacDonald



**State-of-the-art equipment for:**

- Even better patient care
- Retention & recruitment of physicians and other healthcare professionals
- Reduction of wait times
- An increase in surgeries (hip, knee, cancer)
- Quicker diagnostic results

## Your Donation COUNTS! Your Gift = Medical Equipment

100% of all medical equipment must be raised locally.

You can help give our doctors, nurses and staff the tools they need to care for those who walk through our doors. From wheelchairs to pain pumps from surgical equipment to cardiac monitors, x-ray machines, scopes and a faxitron – our equipment pieces range from \$300 - \$750,000 each.



## YOUR DONATION COUNTS!

Please take a moment and reflect on what our community would be like without our hospital. Our health care team has one main focus - YOU - the patient. In the last year the health care team has touched the lives of countless people and their families with their compassion, skill and expertise.

Every gift you give impacts the care we are able to provide. Your support purchases essential medical equipment - equipment we can't afford to be without. We count on you to help us provide quality and patient-focused care. Thank you!



**YES, I care! I wish to support our Hospital.**

Name: \_\_\_\_\_ Address: \_\_\_\_\_

City: \_\_\_\_\_ Postal Code: \_\_\_\_\_ Telephone: \_\_\_\_\_

Enclosed is my cheque to Stratford General Hospital Foundation. Email: \_\_\_\_\_

\$1,000  \$500  \$250  \$100  \$50  \$25 I prefer to give \$ \_\_\_\_\_

Card # \_\_\_\_\_ Expiry Date \_\_\_\_\_

I'd like to pledge my support of \$ \_\_\_\_\_ each year over the next \_\_\_\_\_ years.

Signature \_\_\_\_\_ Date \_\_\_\_\_

A receipt will be issued for tax purposes. Charitable Registration # BN 11920 0004 RR0001  
Our donor records are confidential. We do not share our lists.

*Thank you for caring!*





**Thank you to our donors  
for helping us  
keep our promise!**

- the promise every staff member makes to do their best in performing their role in patient-centred care
- the promise of every team member to ensure exceptional care
- the promise of our community and donors in making an impact and being engaged as an integral part of the healthcare team
- the promise of the Foundation to be committed to the highest standards of philanthropy, accountability and donor relations.

**We're there for you 24/7  
Now we need you!**

Please give generously  
from the heart for  
state-of-the-art  
technology.

# Promises made; promises kept

## **SGH FOUNDATION MONITOR...**

is published for the information of our donors, supporters and friends of the SGH Foundation.

### **STRATFORD GENERAL HOSPITAL FOUNDATION**

46 General Hospital Drive, Stratford, ON N5A 2Y6

*The SGH Foundation works with the community to help raise funds for equipment, upgrading of facilities and special projects of the Stratford General Hospital.*



Readers will note a change to coated paper, which is the same cost and allows clearer pictures. Contains recycled fibre and is recyclable.

Charitable Reg. BN 11920 0004 RR0001



Stratford General Hospital Foundation is listed as a Code Builder...one of the first 100 charities nationally to comply with Imagine Canada's Ethical Fundraising and Accountability Code earning the right to proudly display the Ethical Code trustmark on all our fundraising materials

Stratford General Hospital Foundation  
46 General Hospital Drive  
Stratford, Ontario N5A 2Y6

CANADA		POSTES
POST		CANADA
	Postage paid	Port payé
	Personalized Mail	Courier personnalisé
	1931474	



*"People Caring for People"*



SGHFOUNDATION.ORG | 519.272.8210 EXT. 2626